

MCB1800/4300



A

B

C

D

A

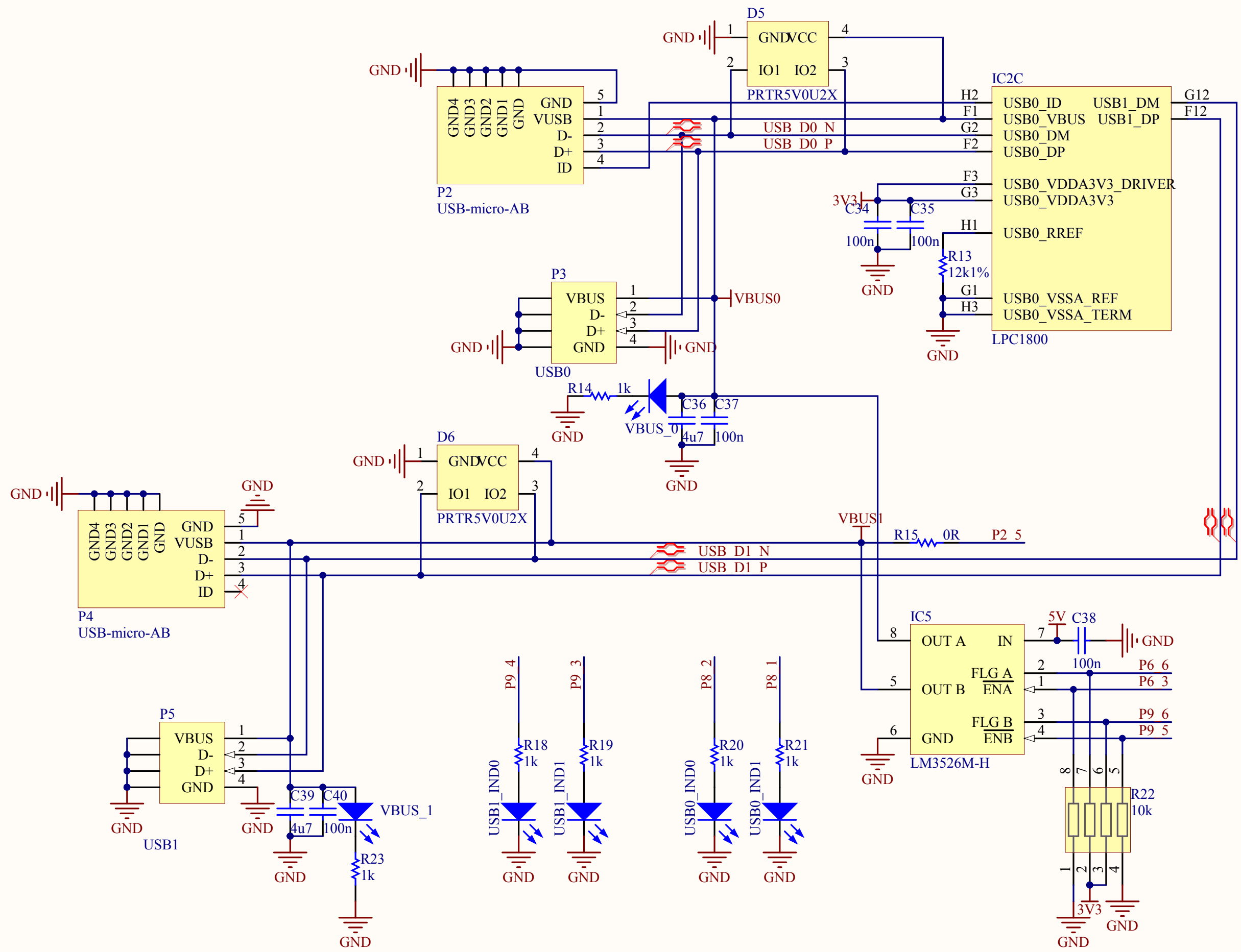
B

C

D

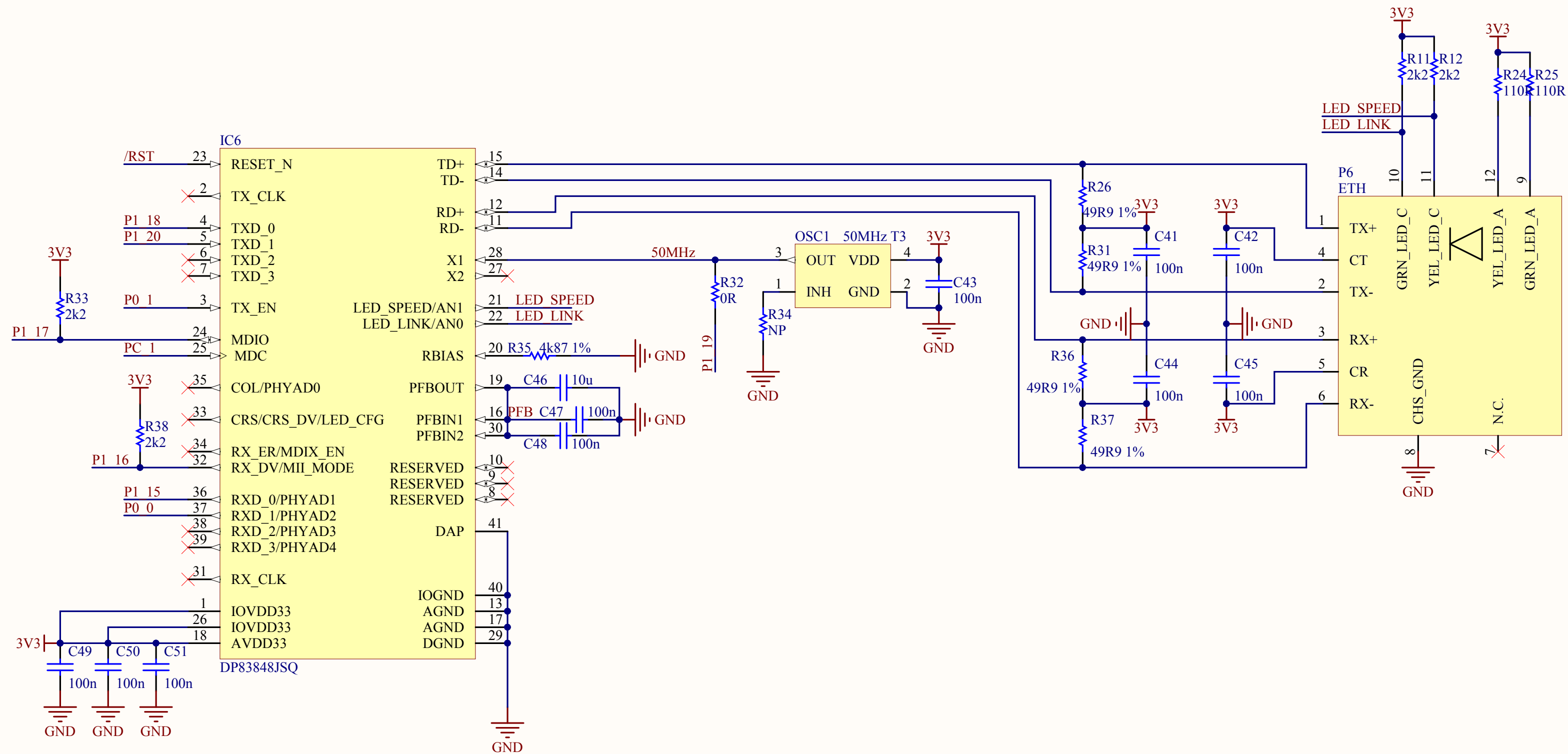
IC2E		LPC1800	
A5	P2	P1_0	P5_0
A6	R2	P1_1	P5_1
A7	R3	P1_2	P5_2
/OE	P5	P1_3	P5_3
P1_4	T3	P1_4	P5_4
/CS0	R5	P1_5	P5_5
/WE	T4	P1_6	P5_6
D0	T5	P1_7	P5_7
D1	R7	P1_8	
D2	T7	P1_9	P6_0
D3	R8	P1_10	P6_1
D4	T9	P1_11	P6_2
D5	R9	P1_12	P6_3
D6	R10	P1_13	P6_4
D7	R11	P1_14	P6_5
P1_15	T12	P1_15	P6_6
P1_16	M7	P1_16	P6_7
P1_17	M8	P1_17	P6_8
P1_18	N12	P1_18	P6_9
P1_19	M11	P1_19	P6_10
P1_20	M10	P1_20	P6_11
			P6_12
A13	T16	P2_0	
A12	N15	P2_1	P7_0
A11	M15	P2_2	P7_1
P2_3	J12	P2_3	P7_2
P2_4	K11	P2_4	P7_3
P2_5	K14	P2_5	P7_4
A10	K16	P2_6	P7_5
A9	H14	P2_7	P7_6
A8	J16	P2_8	P7_7
A0	H16	P2_9	
A1	G16	P2_10	P8_0
A2	F16	P2_11	P8_1
A3	E15	P2_12	P8_2
A4	C16	P2_13	P8_3
			P8_4
AUD_BCKI	F13	P3_0	P8_5
P3_1	G11	P3_1	P8_6
P3_2	F11	P3_2	P8_7
SPIFI_SCK	B14	P3_3	P8_8
SPIFI_IO3	A15	P3_4	
SPIFI_IO2	C12	P3_5	P9_0
SPIFI_IO1	B13	P3_6	P9_1
SPIFI_IO0	C11	P3_7	P9_2
SPIFI_/CS	C10	P3_8	P9_3
			P9_4
P4_0	D5	P4_0	P9_5
LCD_VD19	A1	P4_1	P9_6
LCD_VD3	D3	P4_2	
P4_3	C2	P4_3	
P4_4	B1	P4_4	
LCD_VSYNC	D2	P4_5	
LCD_EN	C1	P4_6	P0_0
LCD_DOTCLK	H4	P4_7	P0_1
P4_8	E2	P4_8	
LCD_VD11	L2	P4_9	
LCD_VD10	M3	P4_10	

IC2D		LPC1800	
PA_0	L12	PA_0	PD_0
PA_1	J14	PA_1	PD_1
PA_2	K15	PA_2	PD_2
PA_3	H11	PA_3	PD_3
A23	G13	PA_4	PD_4
			PD_5
LCD_VD23	B15		PD_6
LCD_VD22	A14	PB_0	PD_7
LCD_VD21	B12	PB_1	PD_8
LCD_VD20	A13	PB_2	PD_9
LCD_VD15	B11	PB_3	PD_10
LCD_VD14	A12	PB_4	PD_11
LCD_VD13	A6	PB_5	PD_12
		PB_6	PD_13
PC_0	D4		PD_14
PC_1	E4	PC_0	PD_15
PC_2	F6	PC_1	PD_16
PC_3	F5	PC_2	
PC_4	F4	PC_3	
PC_5	G4	PC_4	PE_0
PC_6	H6	PC_5	PE_1
PC_7	G5	PC_6	PE_2
PC_8	N4	PC_7	PE_3
PC_9	K2	PC_8	PE_4
PC_10	M5	PC_9	PE_5
PC_11	L5	PC_10	PE_6
PC_12	L6	PC_11	PE_7
PC_13	M1	PC_12	PE_8
PC_14	N1	PC_13	PE_9
		PC_14	PE_10
PF_0	D12		PE_11
PF_1	E11	PF_0	PE_12
PF_2	D11	PF_1	PE_13
PF_3	E10	PF_2	PE_14
PF_4	D10	PF_3	PE_15
PF_5	E9	PF_4	
PF_6	E7	PF_5	
PF_7	B7	PF_6	ADC0
PF_8	E6	PF_7	ADC1
PF_9	D6	PF_8	ADC2
PF_10	A3	PF_9	ADC3
PF_11	A2	PF_10	ADC4
		PF_11	ADC5
CLK0	N5		ADC6
CLK1	T10	CLK0	ADC7
CLK2	D14	CLK1	
CLK3	P12	CLK2	SCL
		CLK3	SDA



G12 F12 RDM 33 RDP 33

RDM and RDP resistors are recommended by NXP for USB1 but are not implemented on the MCB1800/4300.



MCB1800/4300

Ethernet.SchDoc

Size: A4

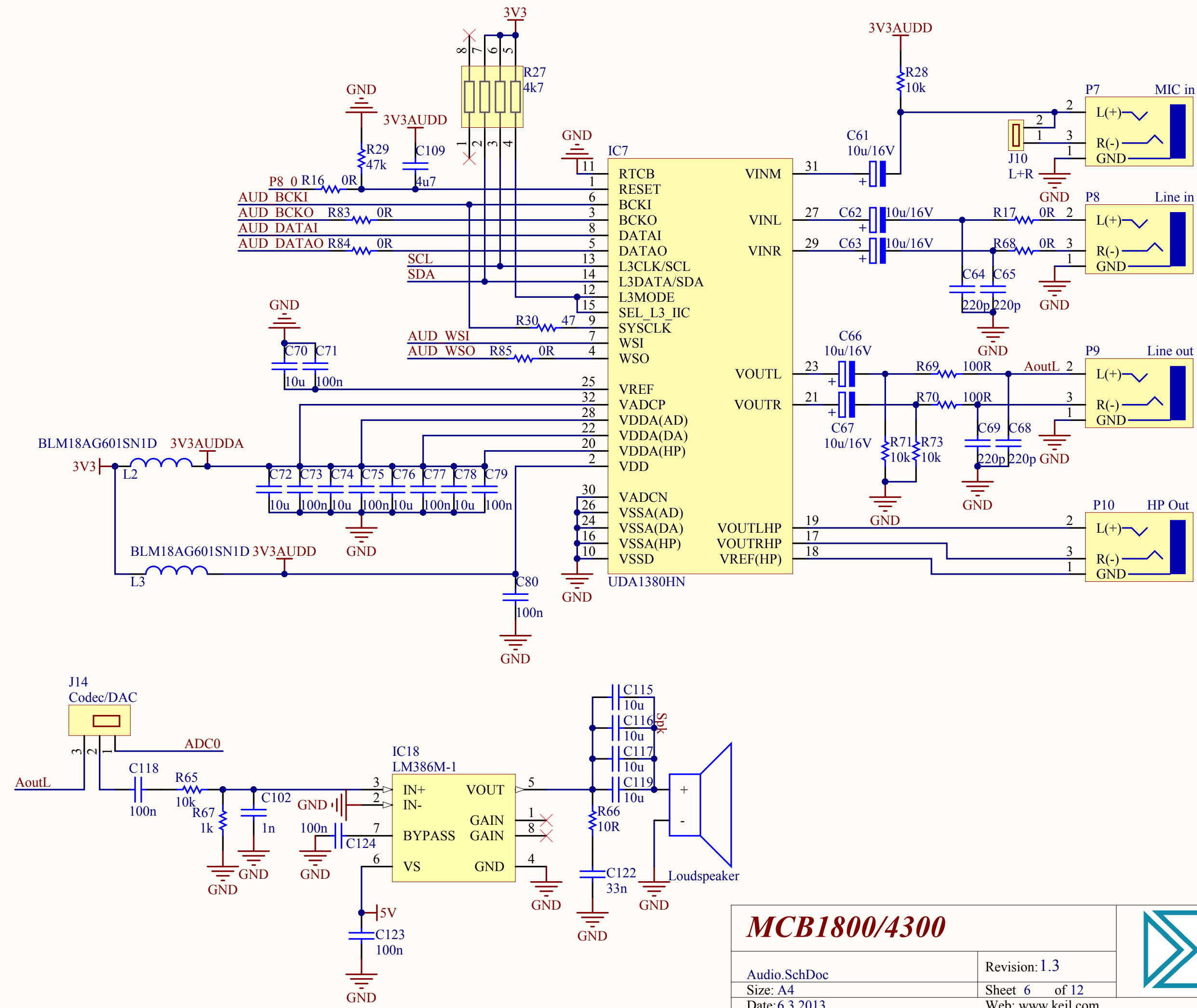
Date: 6.3.2013

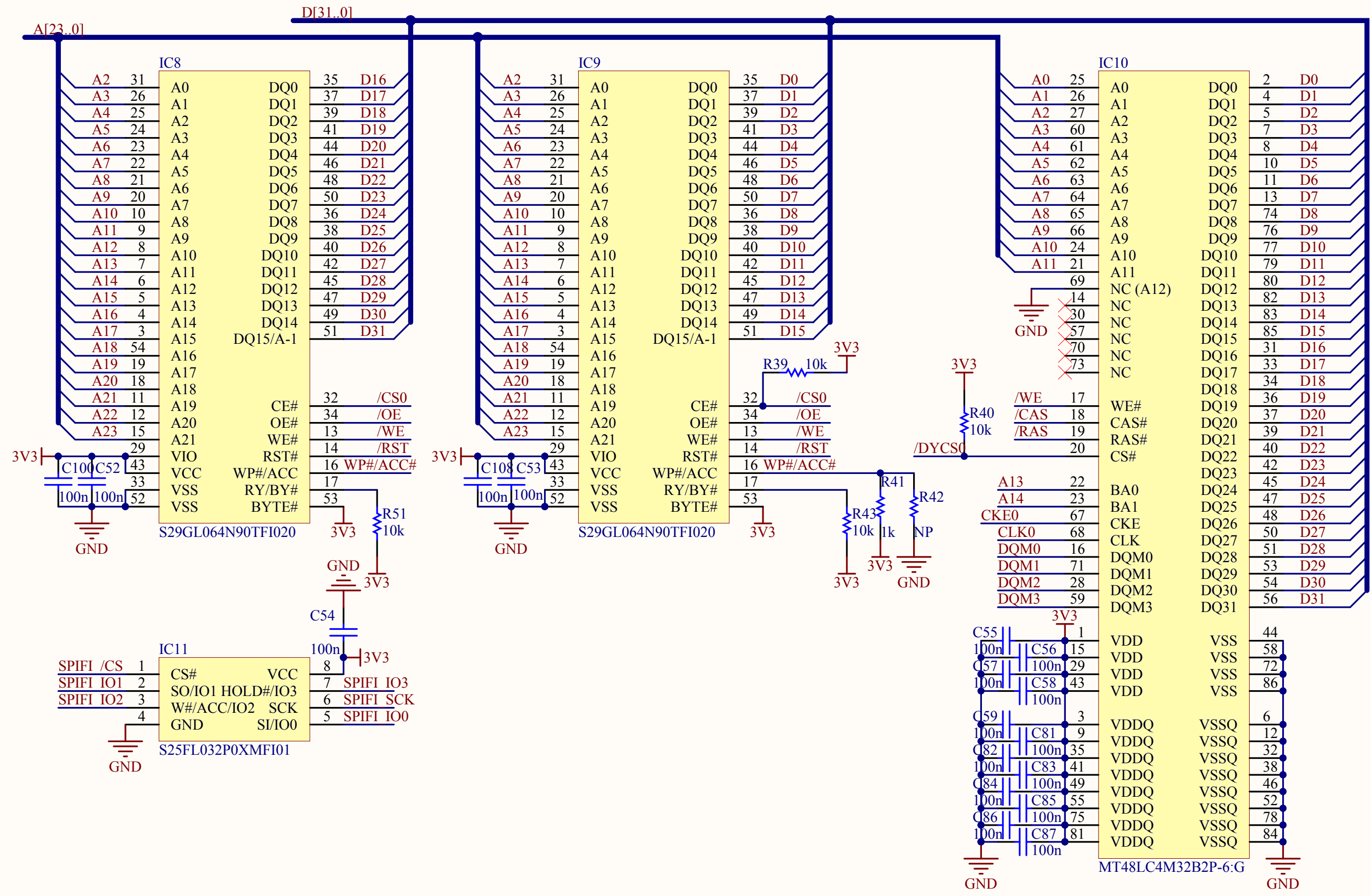
Revision: 1.3

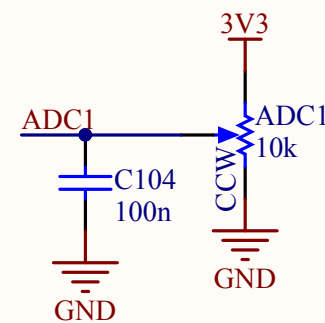
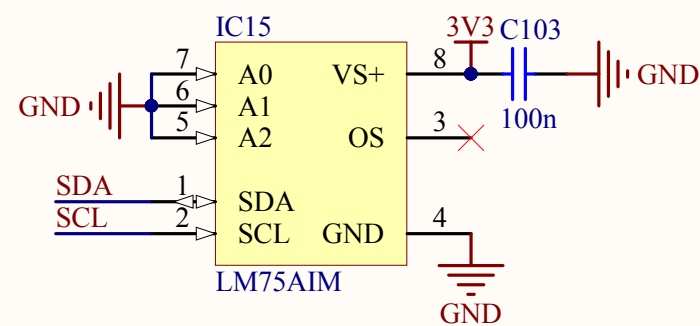
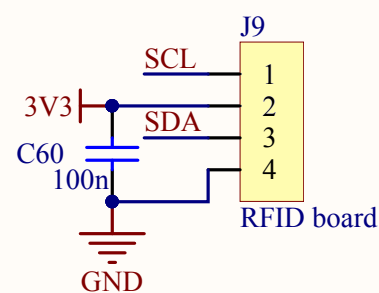
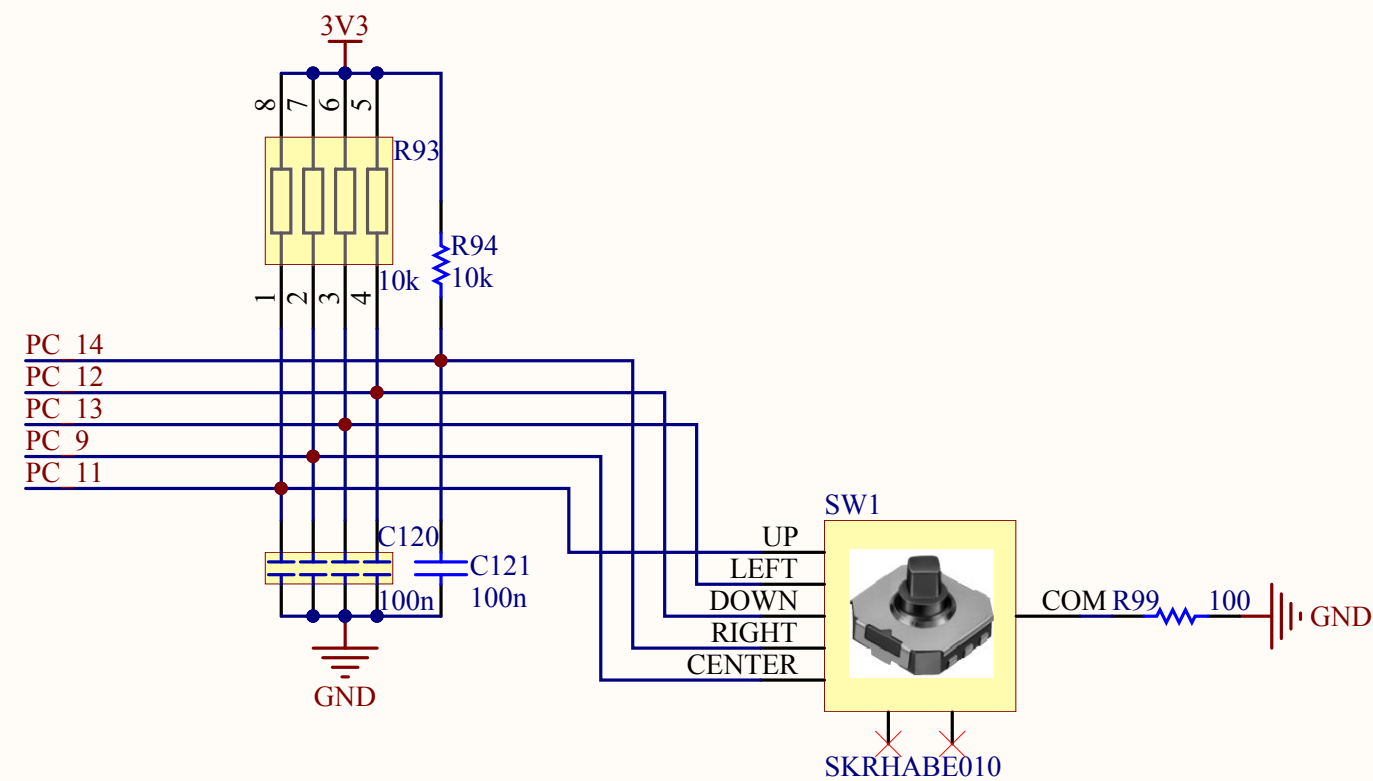
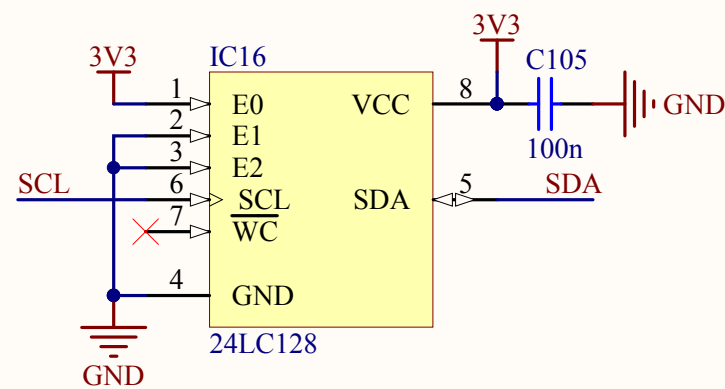
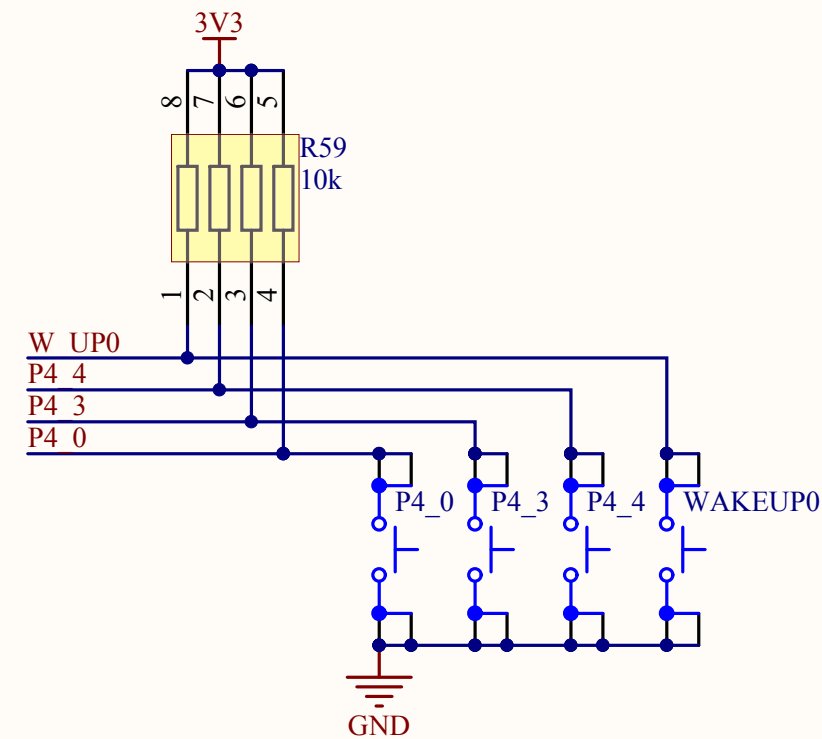
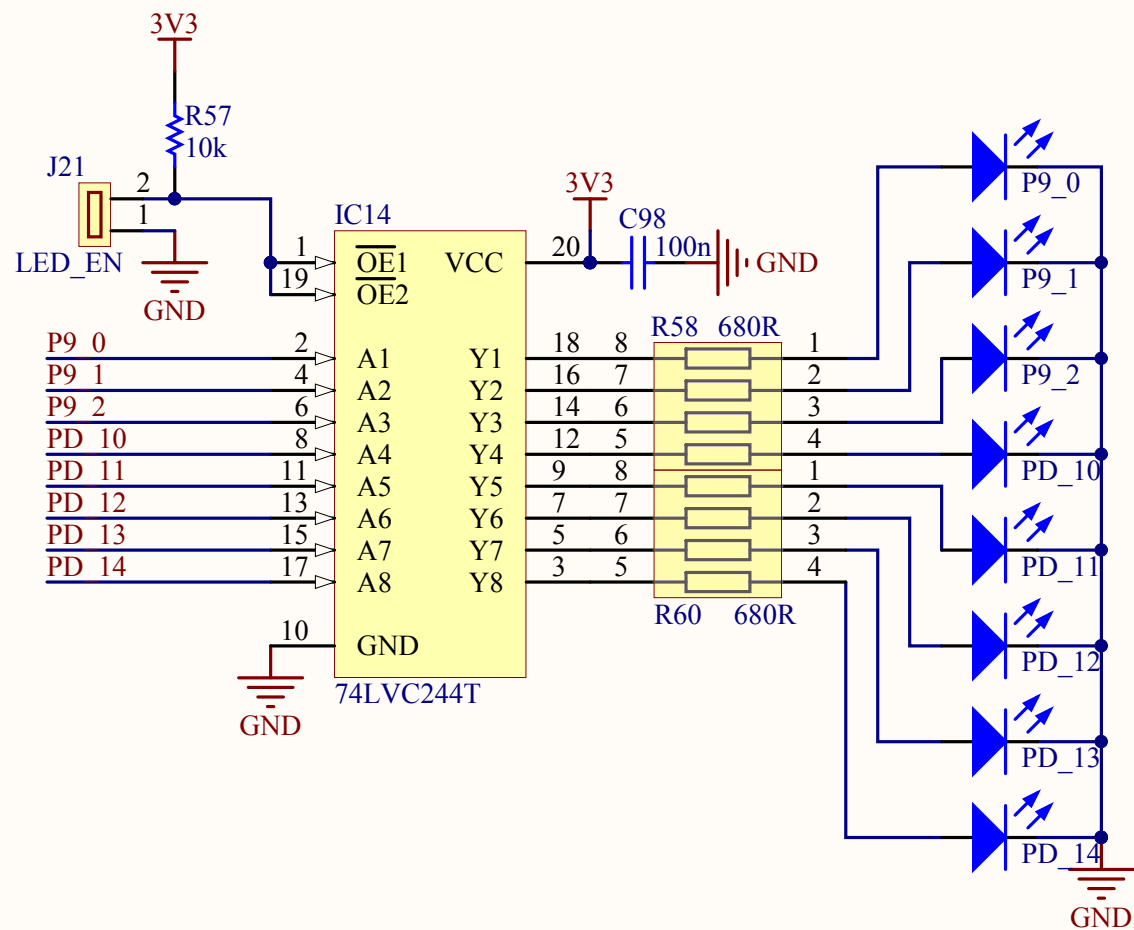
Sheet 5 of 12

Web: www.keil.com









MCB1800/4300

LED - SWITCH - TEMP.SchDoc

Size: A4

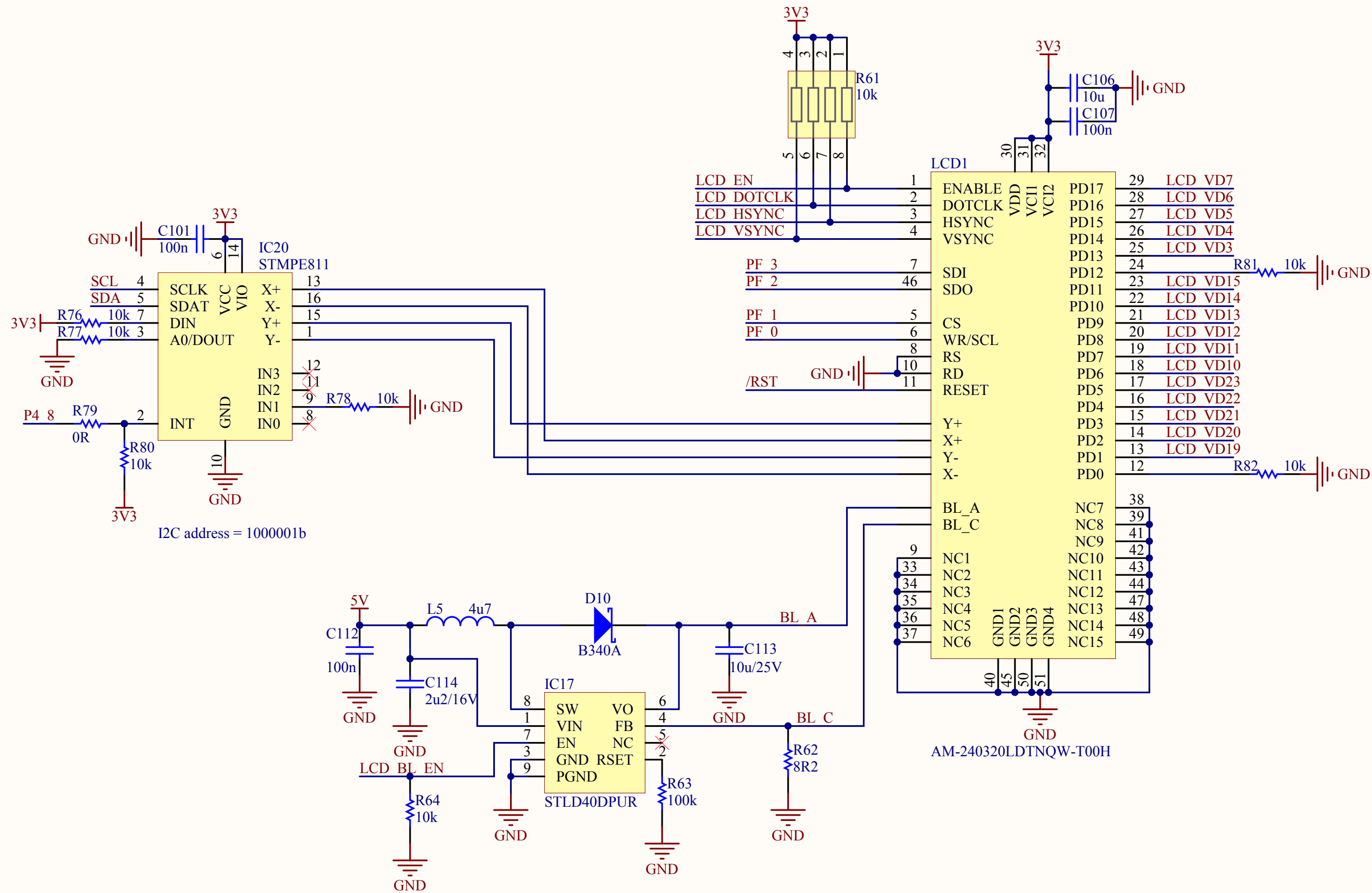
Date:6.3.2013

Revision: 1.3

Sheet 9 of 12

Web: www.keil.com





MCB1800/4300

LCD.SchDoc
Size: A4
Date: 6.3.2013

Revision: 1.3
Sheet 10 of 12
Web: www.keil.com



A

B

C

D

A

B

C

D

